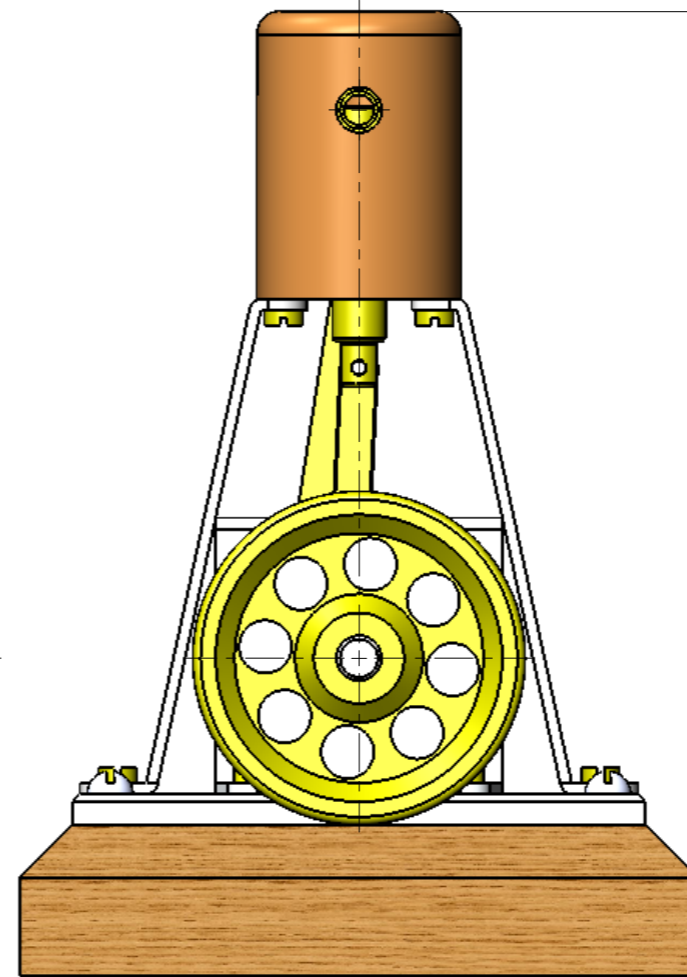
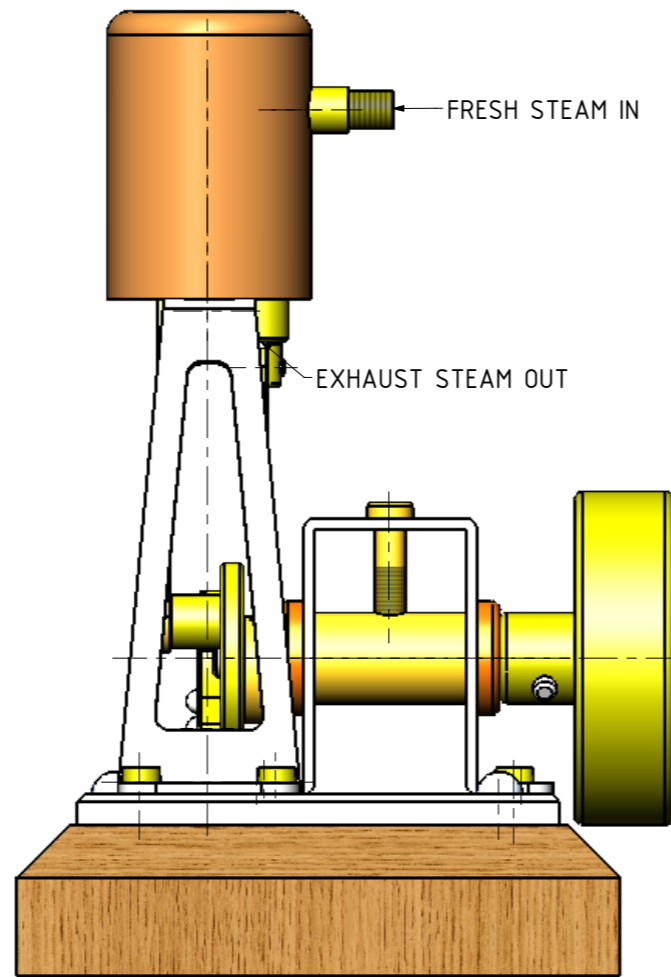
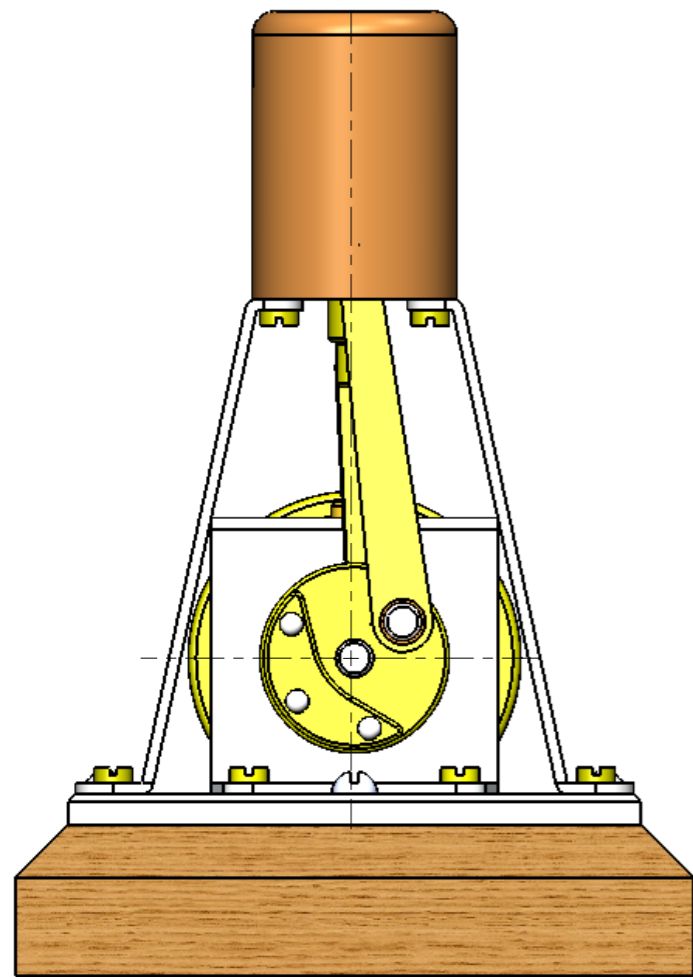
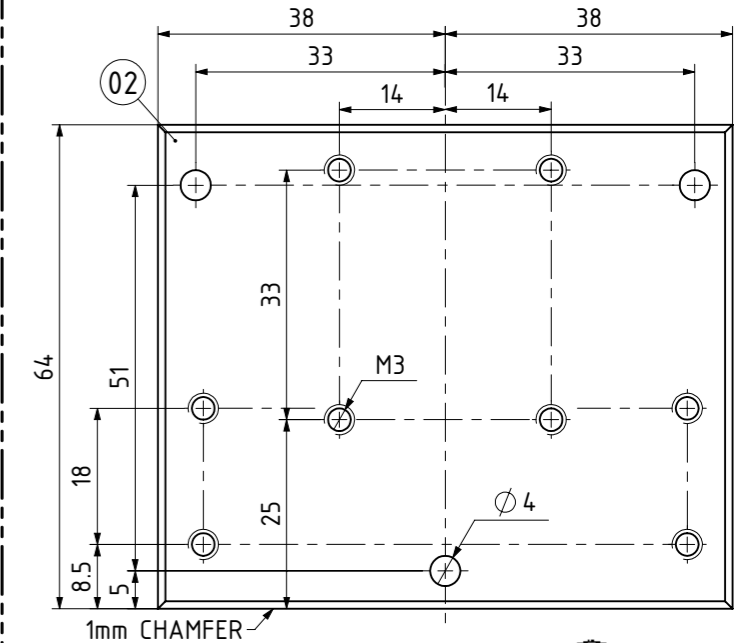
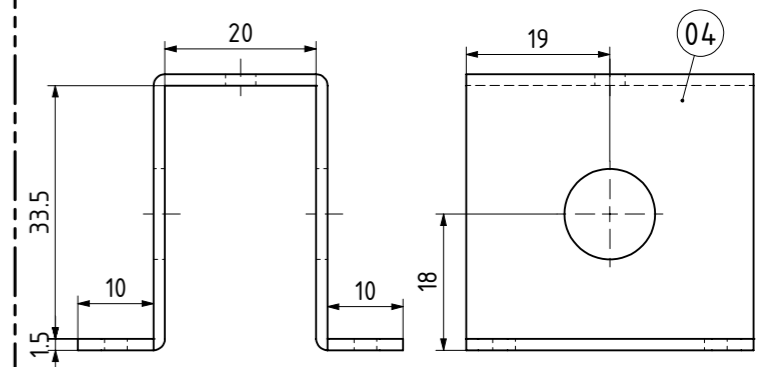
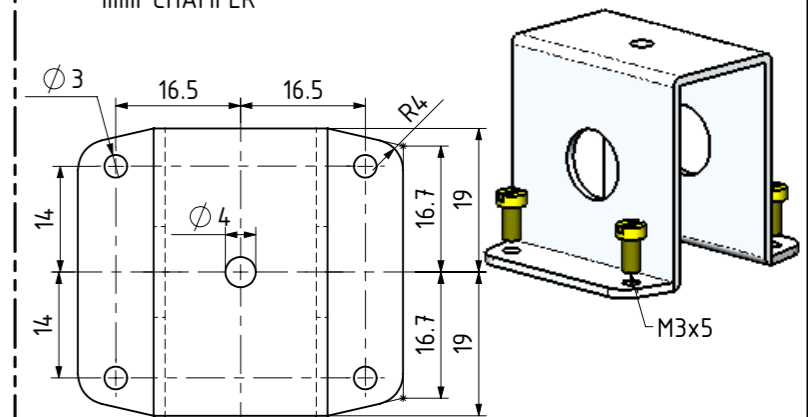


QTY.	PART NUMBER
1	PM63-01-WOODEN BASE
1	PM63-02-BASE PLATE
3	PM63-03-4mmx15 WOOD SCREW
1	PM63-04-CRANK SHAFT BEARING HOLDER
1	PM63-05-BEARING END
2	PM63-06-CYLINDER HOLDING BRACKET
1	PM63-07-CYLINDER
1	PM63-08-FLYWHEEL
1	PM63-09-CRANK SHAFT
1	PM63-10-CRANK PLATE
1	PM63-11-CRANK PIN
1	PM63-12-CRANK PIN SPACER
1	PM63-13-ECCENTRIC
1	PM63-14-VALVE
1	PM63-15-VALVE CON ROD
1	PM63-16-PISTON
1	PM63-17-PISTON CON ROD



127.5



THIS ENGINE WAS PUBLISHED IN THE "POPULAR MECHANICS" MAGAZINE IN JANUARY 1963 PAGES 142 TO 146

TITLE: SIMPLE STEAM ENGINE CALLED "ONE-LUNGER"
PARTS AND ASSEMBLIES

A3

IF NOT STATED ALL CHAMFERS AND FILLETS 0.1mm

DO NOT SCALE OF DRAWING

REMOVE ALL BURS AND SHARP EDGES

REV	DESCRIPTION	DATE
A	ISSUED FOR CONSTRUCTION	

JDW DRAUGHTING SERVICES
12 BRIGHTWELL STREET
PAPAKURA NEW ZEALAND
TEL/FAX 0064-09-2988815
E-MAIL:dewaal@xtra.co.nz

DRAWN BY
J.A.M. DE WAAL
DATE
JANUARY 2012

PROJECT No:

PROJECTION
DRAWING NUMBER
PM63-01
SCALE 1:1 @A3 OR
AS SHOWN

SHEET
A
REV